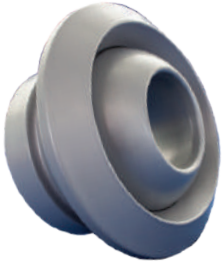




# Multi Directional Nozzle



Multi-adjustable aluminum Nozzles are used for the injection of hot or cold air in ventilation and air conditioning systems where a long throw, high induction and low noise levels are required. The air is diffused through aluminum nozzles of varying sizes that are inserted directly on the fabric in a linear fashion or along the duct where distribution is necessary. The nozzles allow the direction of the air jet to be freely adjusted up to 30° in any direction in relation to the nozzles centerline.

