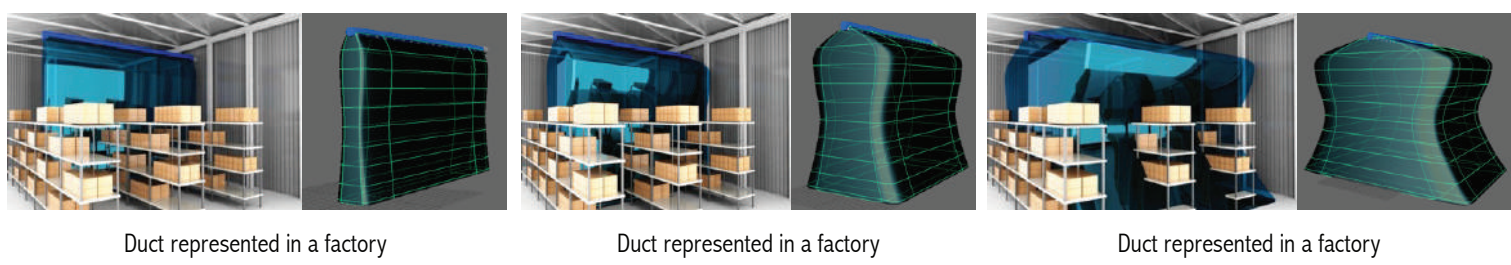




High Range

This system can be composed of two elements; High quality textile nozzles and Multi Directional Aluminum Nozzles. It is characterized by a long throw (up to 60ft) and long penetration distance in order to ventilate large areas.



Duct represented in a factory

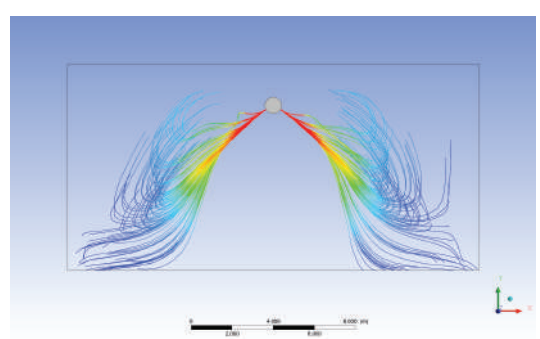
Duct represented in a factory

Duct represented in a factory

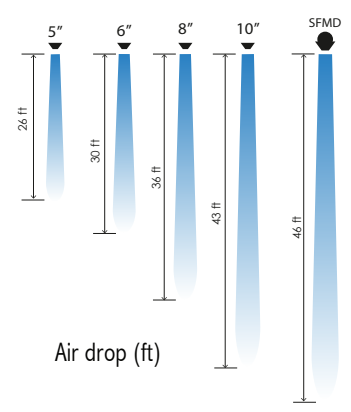
System of nozzles that allows for a greater reach in the air throw, thus guaranteeing the arrival of air at the average comfort height (5ft). The nozzles used for this system are 100% textile and are integrated as a single element to the duct, avoiding damage (rupture or detachment from the duct) and facilitating the laundering process. The diffusion by textile nozzles consists of maintaining an area of air conduction in the base of the nozzle and reducing it to the exit point while maintaining the velocity.

Iner jet Standard design pressure of 1/2 inch wc	
Larger diameter nozzle in	Throw ft
5	26
6	30
7	33
9	40
11	46

Standard design pressure



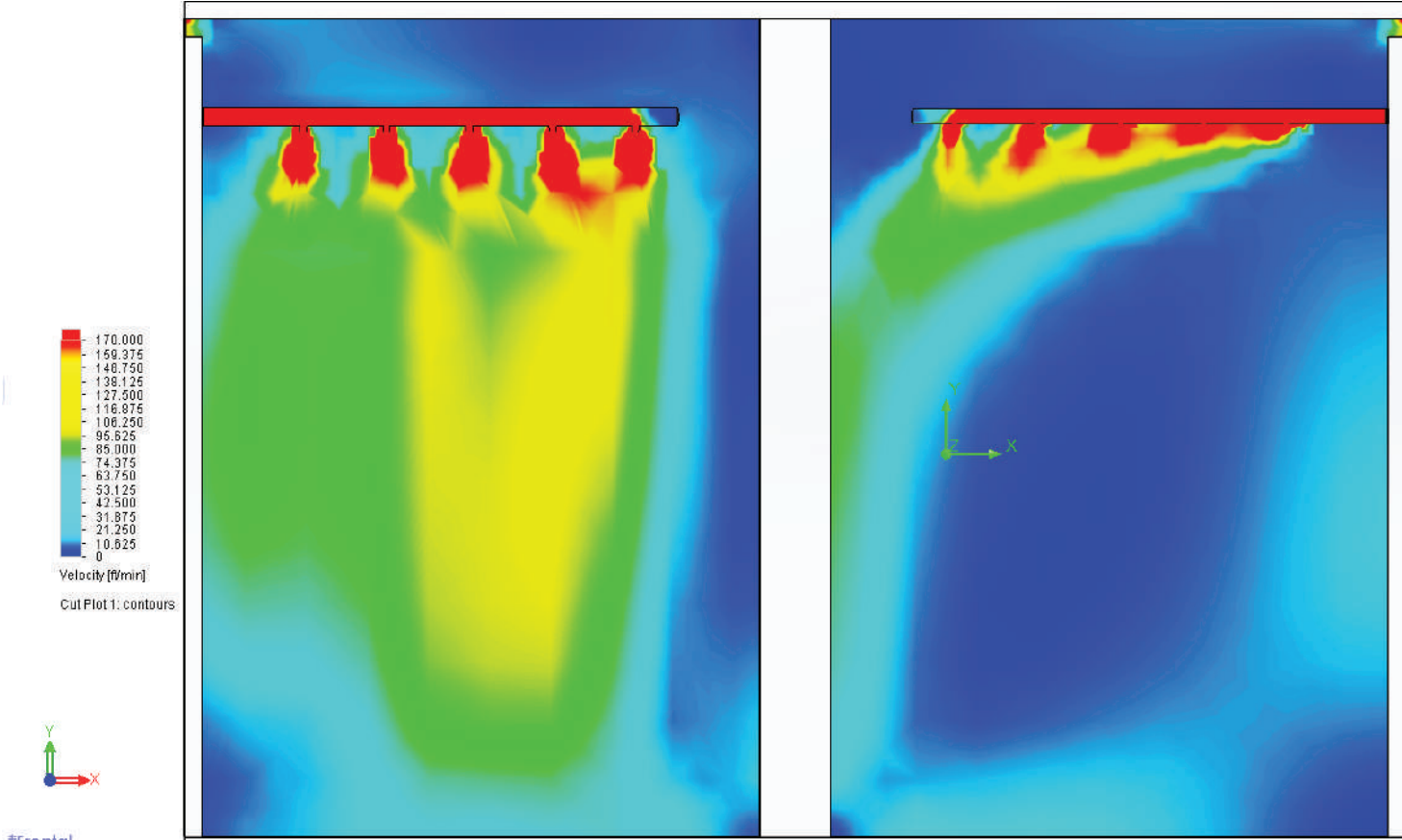
Simulation



Air drop (ft)



High Range



With Nozzles

With Out Nozzles

